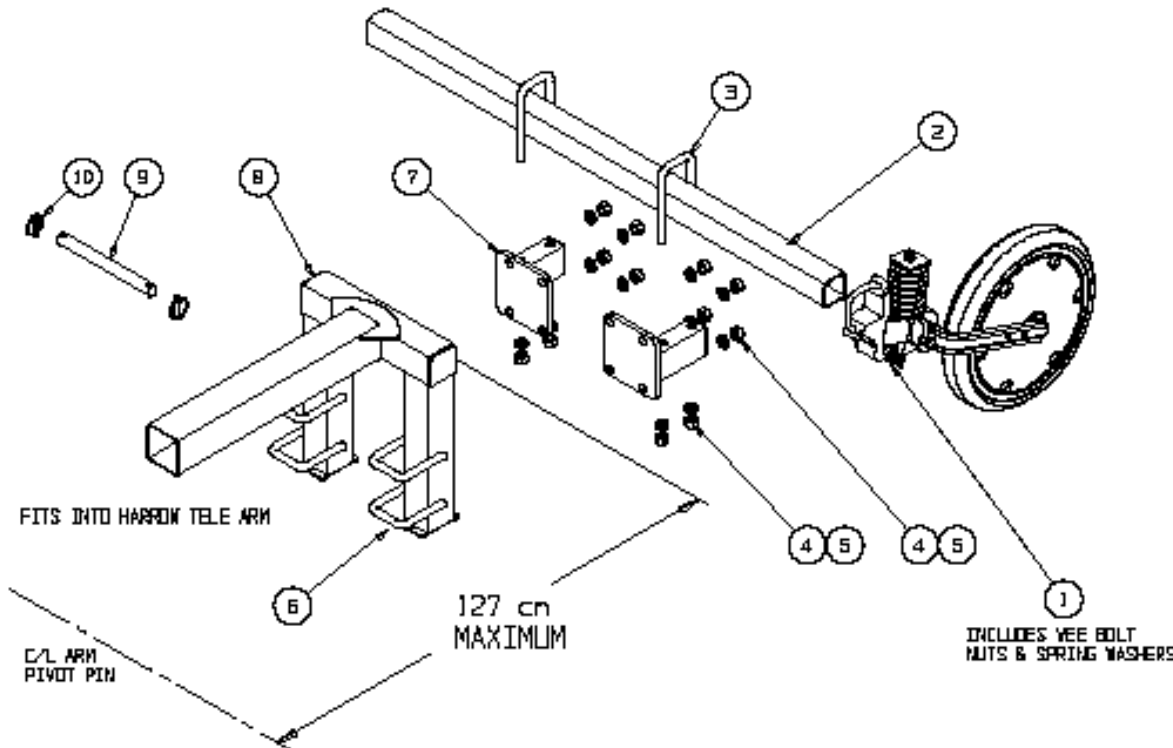


**WARNING: FOLD MACHINE VERY CAREFULLY THE FIRST TIME AFTER FITTING ATTACHEMENTS, LOOK FOR FOULS**

**PRESS WHEEL ASSEMBLY WITH HARROW TELE MOUNTING**

**RETENSION ALL BOLTS AFTER 2 hrs WORKING**

1. Determine length of RHS (2) and quantity of presswheels (1) to match existing harrow gang.  
Ensure there is 5 cm between ends of adjacent RHS (2) for correct function.
2. Attach dropper (8) and determine breakout clearance behind last rank of tines with RHS (2) at 42 cm to 45 cm from bottom of RHS (2) to ground level.  
ENSURE DISTANCE FROM CENTRE OF TELBARM PIVOT PIN AS SHOWN BELOW DOES NOT EXCEED 120 cm
3. Fix outrigger (7). Fit RHS (2) above or below it as determined in step 2.
4. Position and fix press wheel assemblies in line with tines. If Vee bolt interferes with outrigger (7), reverse offset of outrigger (7) relative to dropper (8).
5. Adjust down pressure as required.



• When using harrows in combination with press wheels check that a trailing air seeder hopper does not run over harrows when turning.

10	2	PIBLYTCH	LYNCH PIN
9	1	H53050	LOCKING PIN
8	1	TP4070	DROPPER
7	2	TP4080	OUTRIGGER
6	4	UB4003	U BOLT - M16
5	12	WA18MS	SPRING WASHER - M16
4	12	HJ18M2P	NUT - M16
3	2	UB4002	U BOLT - M16
2	1	RH65654	65 x 65 x 4 RHS LENGTH AS REQD
1	AR	PM4110-40	PRESS WHEEL ASSEMBLY
REF	QTY	PART No	DESCRIPTION

ALL RIGHTS STRICTLY RESERVED  
REPRODUCTION OR USE IN THIRD  
PARTY OR IN ANY FORM OR MANNER  
IS NOT PERMITTED WITHOUT WRITTEN  
AUTHORITY FROM AGMASTER.



ASSY INSTRUCTIONS  
TELE PRESS WHEELS

AI1070