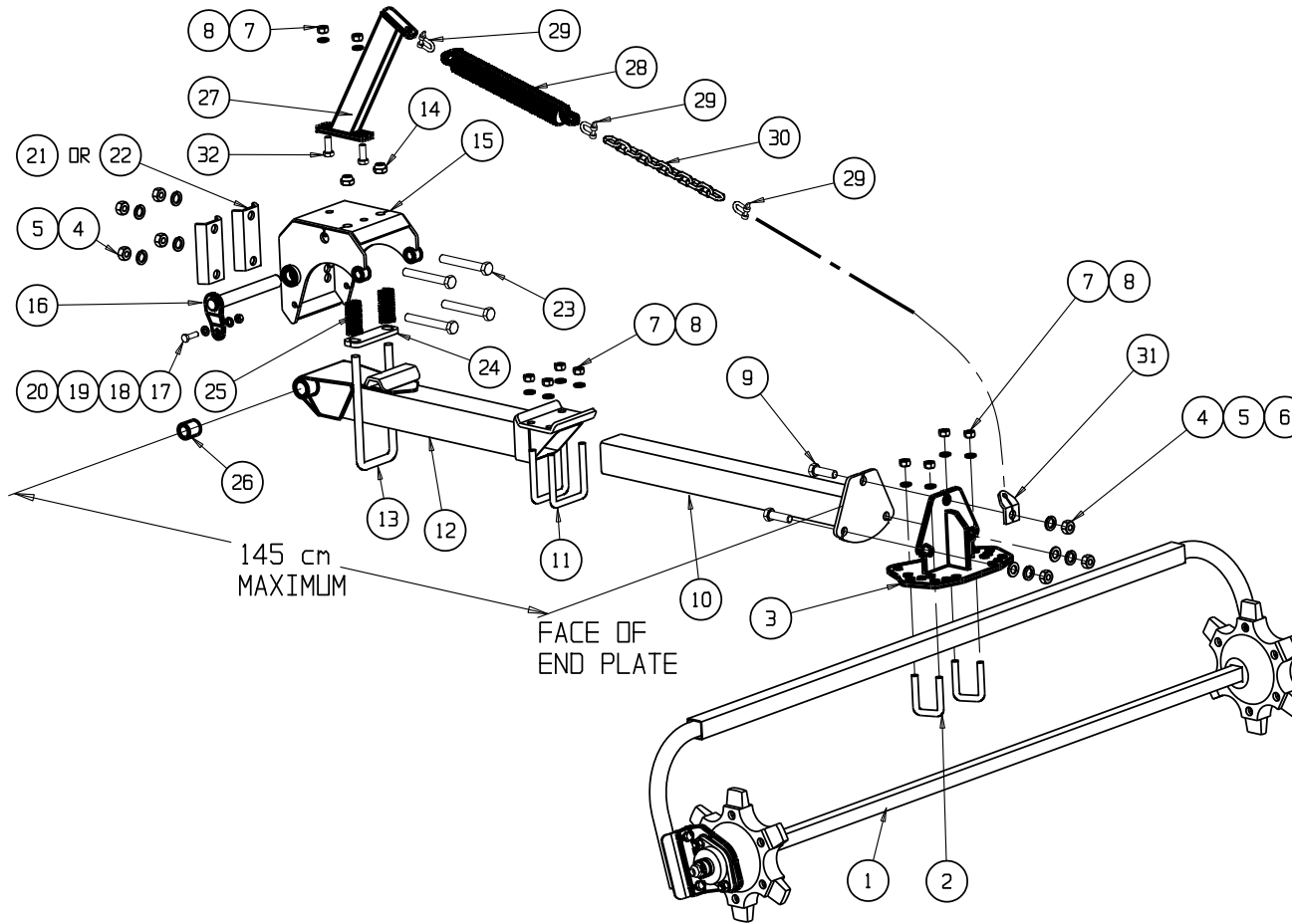


WARNING: FOLD MACHINE VERY CAREFULLY THE FIRST TIME AFTER FITTING ATTACHMENTS, LOOK FOR FOULS

RETENSION ALL BOLTS AFTER 8 hrs WORKING



See sheet 2 for assembly instructions

32	2	BD16M40		BOLT - M16 X 40
31	1	HK3620	A4	LIFTING LUG
30	1	CH8		CHAIN
29	3	CH8SH		SHACKLE
28	1	SP3012	A4	TENSION SPRING
27	1	HK3610	A4	TENSION SPRING ARM
26	2	TA3123		BUSH - HARROW ARM
25	2	SP3011	A4	SPRING - NOT REQD ON NON FOLD M/C
24	1	HS3090	A4	SPRING PLATE - NOT REQD ON NON FOLD M/C
23	4	BD20M120		BOLT - M20 X 120
22	2	HS3070	A4	CLAMP PLATE
21	2	UB3004	A4	U BOLT M20 X 135 X 102
20	1	NU12M2P		NUT - M12
19	1	WA12MS		SPRING WASHER - M12
18	1	WA12MF		FLAT WASHER - M12
17	1	BD12M40		BOLT - M12 X 40
16	1	HS3040	A4	PIVOT PIN
15	1	HS3030	A4	HEADSTOCK
14	2	NU20MNY		NYLOC NUT - M20
13	1	UB3001	A4	U BOLT - M20
12	1	TA3110	A4	OUTER ARM
11	2	UB3002	A4	U BOLT - M16
10	1	TA3130	A4	INNER ARM
9	3	BD20M60		BOLT - M20 X 60
8	8/10	WA16MS		SPRING WASHER - M16
7	8/10	NU16M2P		NUT - M16
6	2	WA20MF		FLAT WASHER - M20
5	7	WA20MS		SPRING WASHER - M20
4	7	NU20M2P		NUT - M20
3	1	HA3310	A4	TURNTABLE
2	2	UB3003	A4	U BOLT - M16
1	1	HA3240/50/60		HARROW GANG ASSEMBLY
REF	QTY	PART No	DRG SIZE	DESCRIPTION

ALL RIGHTS STRICTLY RESERVED
REPRODUCTION OR ISSUE TO THIRD
PARTIES IN ANY FORM WHATEVER
IS NOT PERMITTED WITHOUT WRITTEN
AUTHORITY FROM AGMASTER.

AGMASTER
2067 MARSHALL ST. COLLIE WA 6225

ASSY INSTRUCTIONS
HARROWS SHEET 1 OF 2

AI1050

WARNING: FOLD MACHINE VERY CAREFULLY THE FIRST TIME AFTER FITTING ATTACHMENTS, LOOK FOR FOULS

1. Lay harrow gangs behind the bar (with bearing assemblise towrds the rear) to determine the best mounting positions, spaces for mounting needs to be a minimum of 20 cm wide.
2. Mount headstock (15) on rear bar, if a mounting position is not central to the gang because of an obstruction, find a space close to the centre of the gang (towards the leading end of the gang is preferable).
3. Fit tension spring arm (27) to headstock (15).
4. Mount outer arm (12), large U bolt (13), spring plate (24) and springs (25) to headstock (15). (spring plate (24) & springs (25) not supplied on combines). Fit inner arm (10) into outer arm (12) and secure with U bolts (11).

ENSURE EXTENDED LENGTH OF ARM AS SHOWN BELOW DOES NOT EXCEED 145 cm

5. Loosely mount turntable (3) to inner arm (10).
6. Bolt gang (1) to turntable (3) at desired angle (20°, 25° or 30°) using U bolts (2), suggested initial middle setting of 25°. Gangs can be set all one way or half one way half the other. Coil harrows are most agresive when left hand end is the leading end. IMPORTANT bearing assemblies must be towards the rear with U arm leaning slightly forward.
7. Lower machine to desired working depth.
8. Tighten the turntable (3) to inner arm (10) so the leading end of the gang (1) is about 2 cm higher than the trailing end (leading end tends to dig in).
9. Adjust large U bolt (13) to within 1 cm of the underside of outer arm (12). This U bolt is for transport.
10. Fit lifting lug (32) to turntable (3). Adjust length of chain (31) to carry approximately half of the harrow weight. If harrows bounce when working, reduce tension.
11. Depending on conditions, altering the turntable (3) angle and tension of spring (28) will vary harrow finish. Taking more weight on the spring can have a greater effect than changing the angle of the gang.

- * On tillage machines with less than 100 mm square RHS stiffening may be required between ranks near the headstock mount position.
- * Harrows may need to be re-levelled occasionally to even up the wear on the tips.
- * Grease bearings weekly. Do not over grease as seals may be damaged.

RETENSION ALL BOLTS AFTER 8 hrs WORKING

ALL RIGHTS STRICTLY RESERVED
REPRODUCTION OR ISSUE TO THIRD
PARTIES IN ANY FORM WHATSOEVER
IS NOT PERMITTED WITHOUT WRITTEN
AUTHORITY FROM AGMASTER.



REF	QTY	PART No	DRG SIZE	DESCRIPTION
				ASSY INSTRUCTIONS HARROWS SHEET 2 OF 2
				AI1050